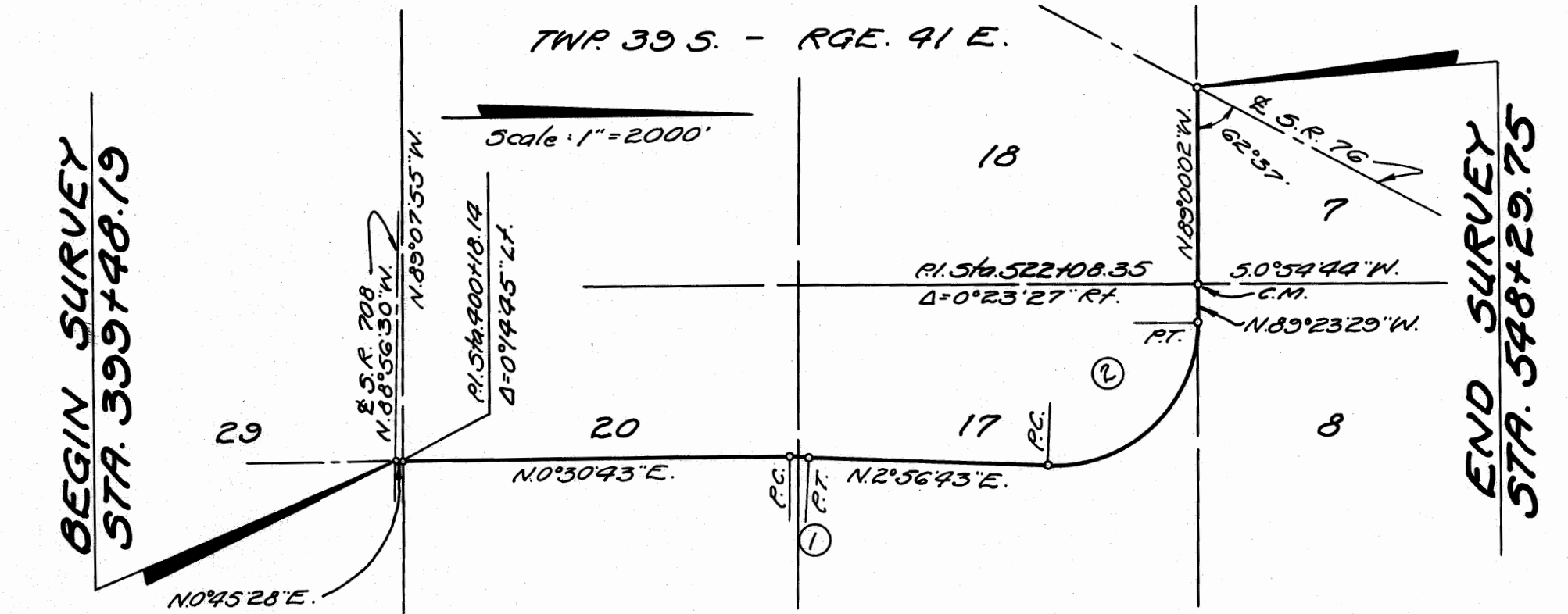


FILED & RECORDED
MARTIN COUNTY, FLA.
APR 25 11 21 AM
COUNTY PUBLIC CLERK

P.I. Sta. 453+02.35
Δ=2°26'00" Rt.
D=1°00'
T=121.68' ①
L=243.33'
R=5729.58'
P.C. Sta. 451+80.67
P.T. Sta. 454+24.00



P.I. Sta. 506+05.62
Δ=92°20'12" Lt.
D=3°00'
T=1989.38' ②
L=3077.89'
R=1909.86'
P.C. Sta. 486+16.24
P.T. Sta. 516+94.13

We, Ralph Davis, as Executive Director of the State Road Department of the State of Florida, and F.K. Strickland, as Secretary of the State Road Department of the State of Florida, do hereby certify that this map is the Official Map of Location and Survey of a portion of Section 89501, designated as a part of State Road 5-711 in Martin County, Florida. Said portion of Section 89501 extending from State Road 708 Northerly and Westerly to State Road 76.

Filed for record in the Office of the Clerk of the Circuit Court, for the County of Martin, State of Florida, in Map Book 4-25-11, Page 56, on the 25th day of April, A.D. 1967.

Prepared and adopted by the State Road Department of the State of Florida under provisions of Section 335.02, Florida Statutes of 1955.

Ralph Davis
Executive Director, State Road Department

Attest: F.K. Strickland
Secretary, State Road Department

Approved: W.W. Mumf.
Engineer of Rights of Way
Date: December 22, 1966

Dorothy Preece
Clerk of the Circuit Court
Martin County, Florida